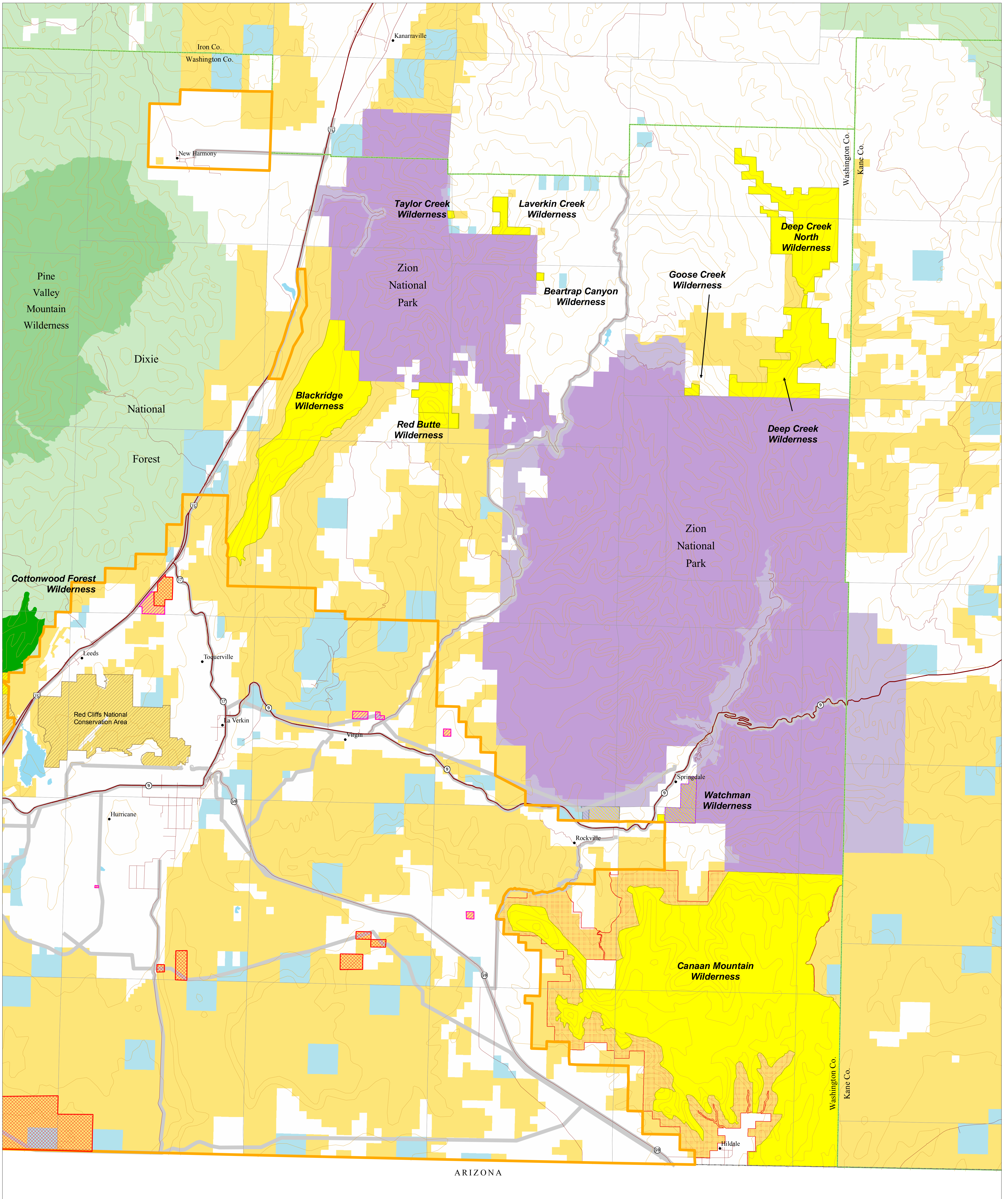


Eastern Washington County, Utah

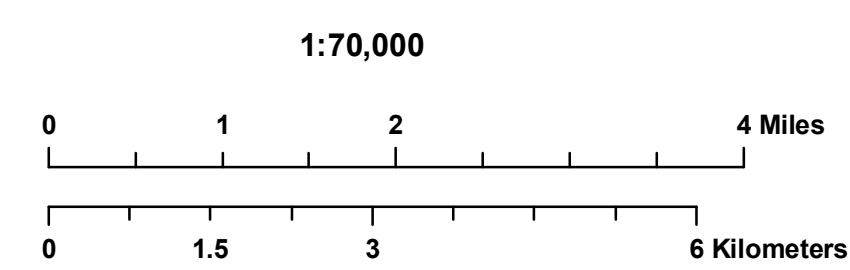
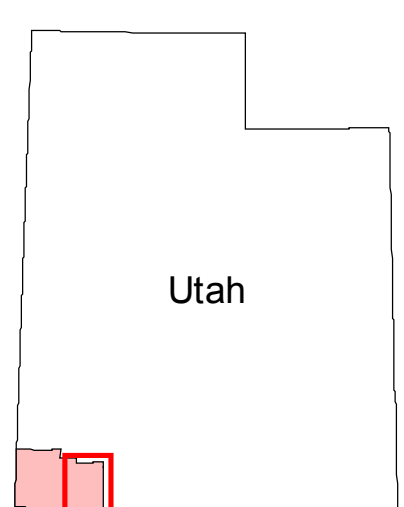
This map prepared at the request of Senator Robert Bennett.
July 18, 2006

R 14 W R 13 W R 12 W R 11 W R 10 W R 9 W

T 38 S
T 39 S
T 40 S
T 41 S
T 42 S
T 43 S



ARIZONA



- | | | | |
|-------------------------|---|---|---------------------------------------|
| State Land | National Forest | First Directed Sale | Land Released from WSA Status |
| State, County, Parks | National Forest Wilderness | Directed Sale Lands | Red Cliffs National Conservation Area |
| Indian Reservation | Proposed National Forest Wilderness | 401 (b) rights-of-way | |
| Public Land | NPS Land | Utility Corridors | |
| BLM Wilderness | Proposed NPS Wilderness | Lands Eligible for Consideration Under Section 102 Disposal | |
| Proposed BLM Wilderness | Administrative jurisdiction transferred from the BLM to NPS | | |